

Gas actuated thermometer stainless steel

TDX

Analogue gas-actuated thermometer stainless steel



• Description

The thermometers of the TDX series are mainly used in the food and pharmaceutical industries, thanks to the absence of mercury and to their full stainless steel construction.

The panel mounting and the armoured stainless steel flexible capillary, used for remote reading, make these thermometers also suitable for other sectors, like machine building, air conditioning and refrigeration. Case diameter, capillary length and bulb size are highly customizable to satisfy any requirement.

www.thtecheu.com

DISCLAIMER: Th Tech Engineering srl operates a policy of continuous product development.
We reserve the right to change specification without prior notice.

Th Tech Engineering srl Strada Ovidiu Cotrus, 21 - 300514 Timisoara - RO - Tel. +40 356 113400 - email office@thtecheu.com

Technical specifications

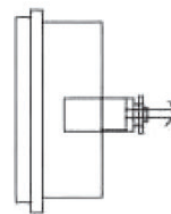
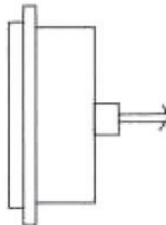
| | |
|----------------------|---|
| Dial size mm | Ø 80 - 100 - 150 |
| Accuracy | ± 1 according to EN 13190 in range of measure |
| Measuring principle | Gas-pressure inert gas filling |
| Bulb | Stainless steel AISI 316 |
| Ambient temperature | -30/65°C |
| Over temperature | 20% V.F.S. up to 160°C - 10% V.F.S. over |
| Max working pressure | 25 bar (without thermowell) |
| Ingress protection | IP55 according to EN 60529 |

Temperature range

| SCALE RANGE IN °C | Scale spacing in °C |
|---|---------------------|
| -40/40; -30/50; -20/40; -20/60; -10/50; 0/60; 0/80 | 1 |
| -50/50; -40/60; -30/70; -20/80; -20/140; -10/110; 0/100; 0/120; 0/160 | 2 |
| -20/180; 0/200; 0/250; 0/300 | 5 |
| 0/400; 0/500; 0/600 | 10 |

Mounting

| | | |
|---|--|--|
| Back flange with 3 holes Bottom output capillary | Front flange 3 hole Back output capillary | Back bracket mounting Back output capillary |
|---|--|--|



• Features

- Case and bezel stainless steel
AISI 304 bayonet clutch
- Capillary AISI 316 stainless steel
- Movement AISI 304 stainless steel
- Window glass 3mm thickness and NBR gasket
- Fillable with glycerine